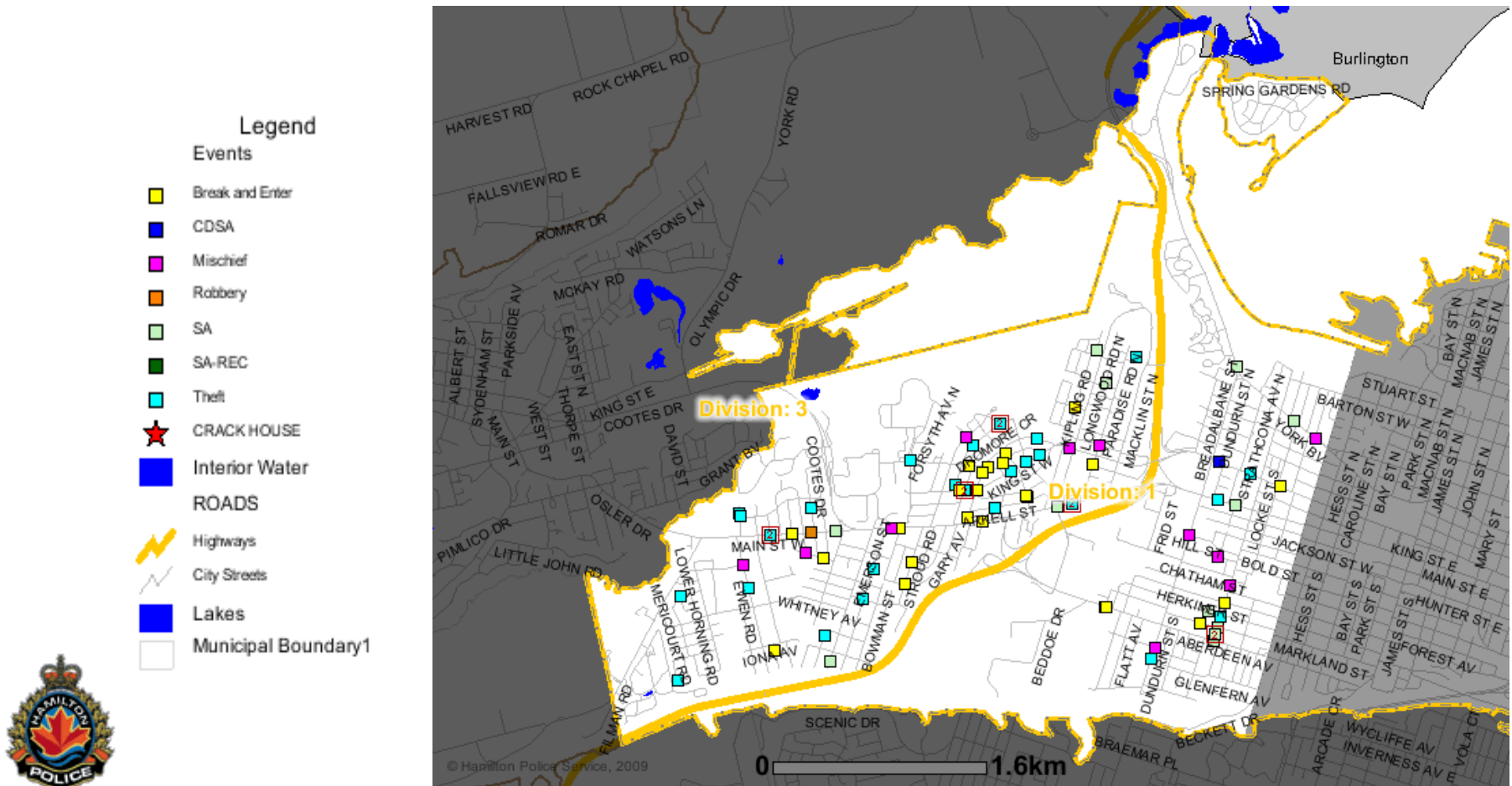


## WEST TOWN CRIME STATS June 2009



**Disclaimer:** Beat Tracker reflects calls-for-service data in Hamilton Police Service’s Computer Aided Dispatch System (CAD). The data has not been edited for the Niche Records Management System or the Uniform Crime Reporting (UCR) purposes. While extensive efforts have been made to offer the most current and correct information possible, the original data source is dynamic and the data is presented “as is”. Therefore, this data may reflect:

- Information not yet verified by further investigation
- Preliminary crime classifications that may be changed at a later date based upon further investigation
- Information may include mechanical or human error

The Hamilton Police Service does not guarantee the accuracy, completeness or timeliness of

the information. The information contained within Beat Tracker is intended to assist police personnel with operational activities only.

June 2009

| <b>BEAT</b> | <b>Robbery</b> | <b>Break &amp; Enter</b> | <b>Stolen Auto</b> | <b>Theft from Auto</b> |
|-------------|----------------|--------------------------|--------------------|------------------------|
| <b>1161</b> | <b>0</b>       | <b>10</b>                | <b>2</b>           | <b>6</b>               |
| <b>1162</b> | <b>0</b>       | <b>13</b>                | <b>4</b>           | <b>0</b>               |
| <b>1163</b> | <b>0</b>       | <b>3</b>                 | <b>3</b>           | <b>0</b>               |
| <b>1164</b> | <b>0</b>       | <b>0</b>                 | <b>0</b>           | <b>0</b>               |
| <b>1165</b> | <b>0</b>       | <b>0</b>                 | <b>1</b>           | <b>0</b>               |
| <b>1166</b> | <b>0</b>       | <b>0</b>                 | <b>3</b>           | <b>0</b>               |

### **Break and Enters (B &E's)**

For the Month of June there were **23** B&E's in **Westdale**, **3** in **Kirkendall** and **0** in **Strathcona's** neighbourhood. 60 % of all entries were open windows or doors. Various items were taken such as laptops, I phones, and alcohol.

### **Thefts From Autos**

For the month of June there were **6** thefts in **Westdale**, **3** in **Kirkendall** and **4** in **Strathcona**.

### **Robberies**

For the Month of June there were **0** robberies in **Westdale**, **0** in **Kirkendall**, and **0** in **Strathcona**.

### **Stolen Auto**

During the month of June there were **6** stolen autos in **Westdale**, **0** in **Kirkendall**, and **0** in **Strathcona**.

### **Notes from the Crime Manager:**

The Crime Managers office has been very busy the last few months. We have run several projects to combat the issues of stolen autos, theft from autos and drug use in the city. Although school is over, Westdale residents continue to be disrupted by noise. Most addresses have been identified and BEAT

officers have attended after the fact to follow up with the residents. 4 PON's have been issued and 1 FEE FOR SERVICE issued by by-law. Now that by-law is up in strength, efforts are being made to give back noise complaints to by-law to enforce. This practice used to be in place until By-Law saw a reduction in staff. (More to follow once more information is learnt).

The MLE tracking program owned by By-Law and Police is up and running. By-Law has had excellent success to date. The fire wall issues police were experiencing have now been resolved. 40% of the BEAT officers have been trained on how to use the program. It is anticipated that all BEAT officers, and officers anticipating doing McMaster Special Duties will be trained by the end of August.

The Crime Managers along with the HEAT officers and uniform patrol will be conducting Project Westdale from 7 July until 7 August. This project is designed to identify B&E targets as well as arrest them.

Please be on the look out for a current suspect. He has been described as male white, in his early 20's, with dark shoulder length hair. His mode of transportation is by bicycle. Based on the fact that several bikes have been stolen in the area with bikes being left behind, it is our belief that he may be switching up the bike after several entries so he may not be detected. Several residents have described him as "trashy, scruffy, does not fit in". If you see such a male, please do not approach and contact police for follow up. This is a person of interest only.

There has been a spike in shed entries in the Durand neighbourhood. The interesting fact is both teens claim to be from Westdale. They are described as suspect # 1, 16-19 years, 5'3", slender build with long black hair.

Suspect # 2 is described as 16-19 years 5'10" with a husky build, blond buzz cut.

Both males were canvassing homes for money. They claimed to be collecting money for the Heart and Stroke foundation; however they only had blank paper with them and nothing to indicate they are collecting for a cause. Numerous neighbours have contacted police in reference to these males. Their mode of transportation is bicycle.

As part of the new graffiti initiative, you may have noticed the new Canada Post Mailboxes. These boxes have been wrapped with a disruptive pattern (stencilled postal codes in various colours) to deter graffiti.

Sgt. Jo-Ann Savoie #191  
Division One Crime Manager  
WEST TOWN  
155 King William St.  
Hamilton, ON L8N 4C1  
Work: (905) 540-5093  
e-mail: [jsavoie@hamiltonpolice.on.ca](mailto:jsavoie@hamiltonpolice.on.ca)